

ABOUT US

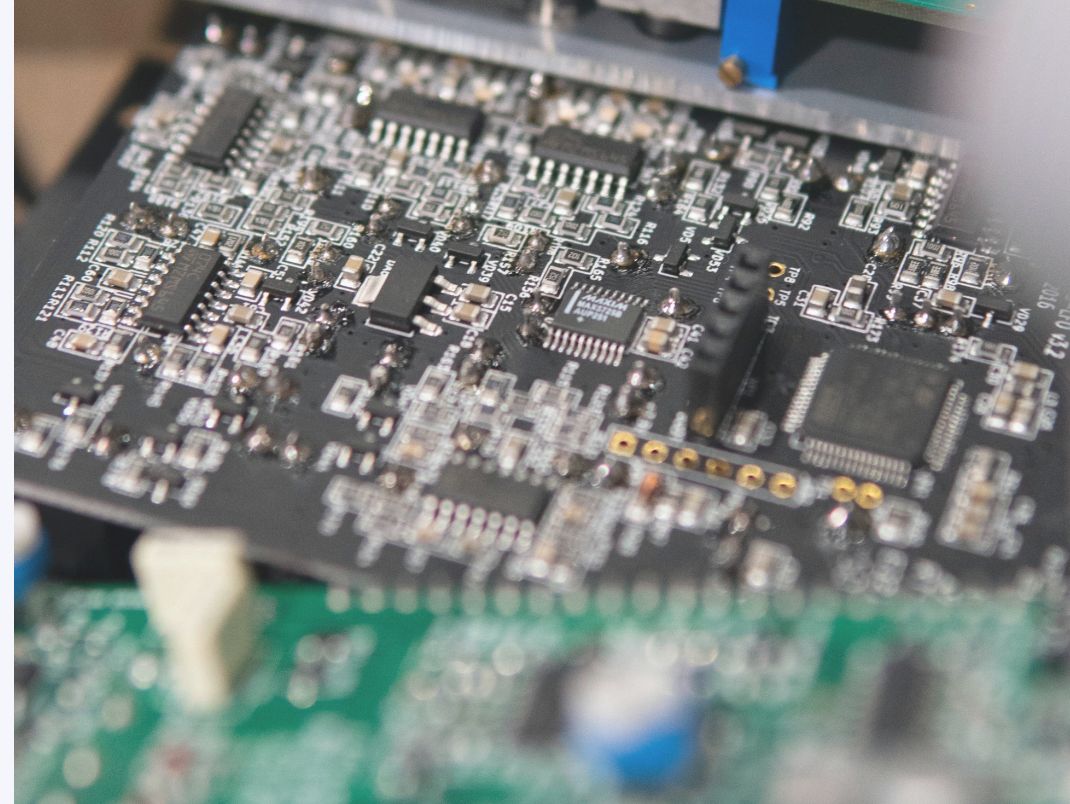
Realtime Technologies was founded in 1996 as Repair, Rework, Refurbishment.

Headquartered in Clonshaugh, Dublin.

The company employs 80 staff

35K sq.ft manufacturing space with focus on PCB and Electronic Contract Manufacturing.

Facilities in Pardubice, Czech Republic (manufacturing), Slovakia.



CONTACT US

Clonshaugh Business Park

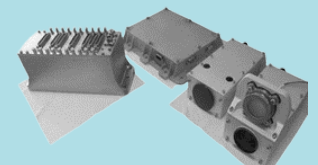
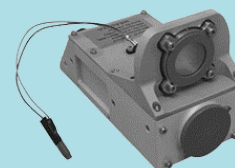
Dublin 17

Ireland

Email: info@realtime.ie

Web: www.realtime.ie

Tel: +353 (1) 8486112



AEROSPACE

Airbus A380



Airbus A400M



Boeing 737



Harrier Jet



Eurofighter Typhoon



Airbus A320



VTOL Aircraft



Airbus H135M



Airbus H125



Airbus Tiger



Airbus H225M

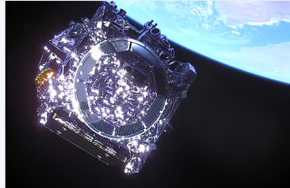


SPACE

Ariane 6 Video Telemetry System



JWST Captured By RTT Camera System



VEGA-C Data Acquisition System



SNC Dreamchaser Spacecraft – KAM500



CST-100 (Starliner) Data Acquisition System



ESA PLDR Microgravity Measurement Payload for ISS



OUR SERVICES

Capabilities

- Complex Printed Circuit Board Manufacturing and Test
- 4 High Volume SMT Lines and ICT Capabilities
- Electro Mechanical Assembly and Test
- High Volume Manufacturing Capabilities
- Low Volume and Prototyping Capabilities
- 3D X-Ray Inspections
- Rework Repair and Refurbishment
- Conformal Coating
- Cleanroom Facilities
- Environmental Testing including Thermal/Humidity Chambers & Vibration Systems
- Thermal Vacuum Chamber – To Be Commissioned
- Development of Innovative Range of Modular Avionics

In-house Equipment

- SMT Lines – Universal Fuzion Placement Machines
- X-Ray – Nordson Dage XD7500VR Jade FP
- Conformal Coating System – Mycronic MYC50
- Selective Solder – Ersa Smartflow 2020
- Automated Optical Inspection (Cyberoptics AOI)
- High Voltage Test Room

Quality

- AS9100D
- ISO 9001
- ISO 13485
- IPC-A-610, IPC-7711/21 Workmanship Standard
- ECSS-Q-ST-70-38C – In Process

